

## MAGOS AREA SURVEILLANCE SOFTWARE - MASS

Integrated and operational with a variety of VMS – Milestone, Avigilon, Genetec, FLIR Latitude, EXACQ, Symphony and more...

Integrated Video Analytics target classification for Minimal FAR

Automatic PTZ Slew-to-cue – plug and play with ONVIF cameras

Advanced Masking / Geo fencing capabilities

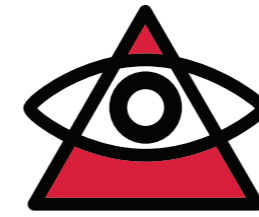
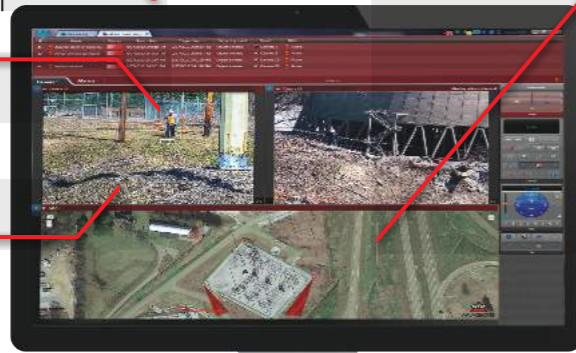
Easy setup and installation with our installer app and setup Wizard

Mobile device operation and Pairing – real time blue force tracking

Automatic Drone launch to Radar detection

Fully unattended operation with Multi Site capabilities

Web, IP, Map based radar control interface



## MAGOS REINVENTING RADARS



## SR-1000 SCEPTER



- 100°**  
Wide Azimuth Coverage
- 30°**  
Unparalleled Elevation Coverage
- 200M 1000M 1250M**  
Detection Range
- 3 Kg**  
Light Weight
- <0.3 M**  
Range Accuracy
- 5W**  
Power

### SR-1000 (SCEPTER)

SR-1000 (Scepter) is Magos' long range addition to our advanced and cost-effective perimeter protection detection solutions for both rural and more saturated environments, without compromising on detection performance.

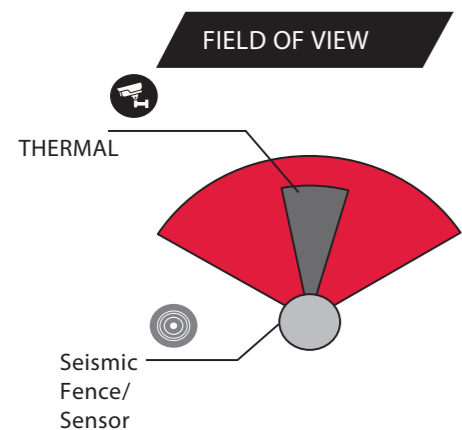
By utilizing state of the art MIMO & Digital beam forming technology it covers an area of more than 500,000m<sup>2</sup> (>120 acres) with a detection range of up to 1250m and yet consumes extremely low power (<5W).

It boasts an ultra-high range accuracy giving it excellent performance in cluttered environments.

Its small size, low power consumption and low weight make it simple to install and renders it ideal as a deployable system as well.

### SPECIFICATIONS

Sensor type	High resolution MIMO digital beam-forming radar
Frequency	C-Band
Detection range	Up to 1000m Human, 1250m for Vehicle/Boat Drone detection - 250m
No moving parts	MTBF of 50,000 hours
Built in tracker	Extremely low required bandwidth
Scan rate	2 scans per second
Azimuth coverage	100°
Elevation coverage	30°
High Range accuracy	<0.3m
Azimuth accuracy	1°
Target detection speed	0.3 – 30 m/sec
Power	48V, <5W
System interface	Ethernet (PoE)
Dimensions	240mm(w) x 340mm(h) x 58mm(d)
Weight	3 Kg



### ALL WEATHER & LIGHTING OPERATION

- MAGOS RADAR: [Sun] [Moon] [Cloud] [Lightning] [Snow]
- THERMAL CAMERA: [Sun] [Moon]
- DAY CAMERA: [Sun]

### SHORT AND LONG TERM COST EFFICIENCY

X22

MAGOS SR-1000 RADAR = THERMAL CAMERA

## APPLICATIONS



### AIRPORTS

**CRITICAL INFRASTRUCTURE**  
Gas industry private sector

**SEAPORT & WATER FACILITIES**  
Dams & Waterfalls

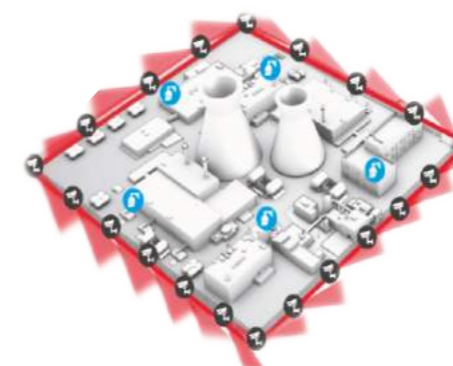
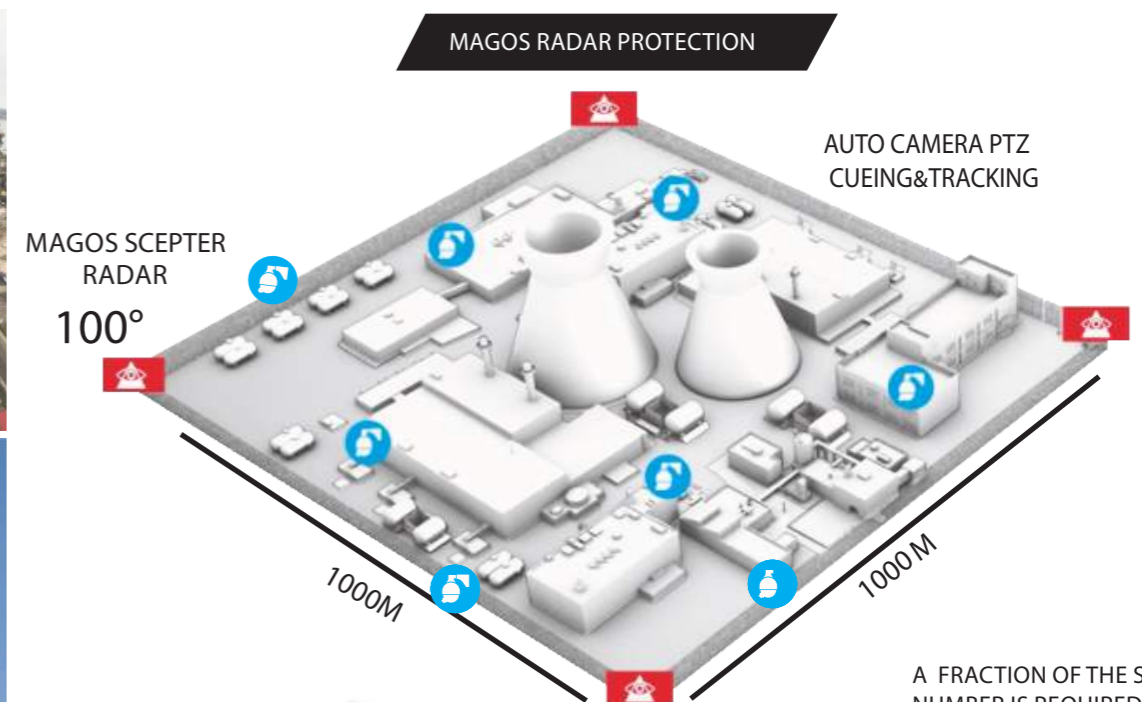
**ELECTRIC & UTILITIES**  
Power plants, Power sub stations

**OIL & GAS**  
Oil field, Pipelines  
Pump stations, Refineries

**DEPLOYABLE SOLUTIONS**  
Anti cattle and equipment theft,  
Large Estate Protection

**HIGH SECURITY AREA**  
Prisons

**VIRTUAL FENCES**  
Private sectors, Logistic centers  
Small sites, Parking lots, Border  
Gap Filling, Government  
facilities, Base/FOB protection



A FRACTION OF THE SENSOR NUMBER IS REQUIRED DUE TO SUPERIOR DETECTION PERFORMANCE & COVERAGE