

# PROTECT YOUR FACILITY WITH THE ULTIMATE PERIMETER PROTECTION SOLUTION



## SCEPTER-C

**RADAR BASED PERIMETER PROTECTION  
COVERING > 300,000m<sup>2</sup> WITH 1 RADAR CE CERTIFIED**

**ALL WEATHER, 24/7 WIDE AREA SURVEILLANCE**

### **MAGOS OFFERS RADAR BASED, COST EFFECTIVE, STATE-OF-THE ART PERIMETER PROTECTION SOLUTIONS**

- All-weather 24/7 Cost effective solution for smaller sites in need of high level security
- **One Radar covers over 60 acre** with wide area coverage: 100° (horizontal) x 30° (vertical) detection up to 600m/1,968 ft
- Integrated with most VMS platforms
- Auto PTZ slew-to-cue integrated with most PTZ brands
- Lower initial investment and Reduced operating costs
- No moving parts and Wide Area coverage
- Install four **SCEPTER-C** and one PTZ Camera for all weather cost effective 360° solution covering over 1,000,000m<sup>2</sup>- 280 acres
- Edge processing driven extreme power & data efficiency – easy solar + wireless integration
- Easy installation & commissioning with **MASS** Wizard site builder
- Integrated with **MASS+AI** - minimal nuisance alarms with **AI** based target classification




# SCEPTER-C

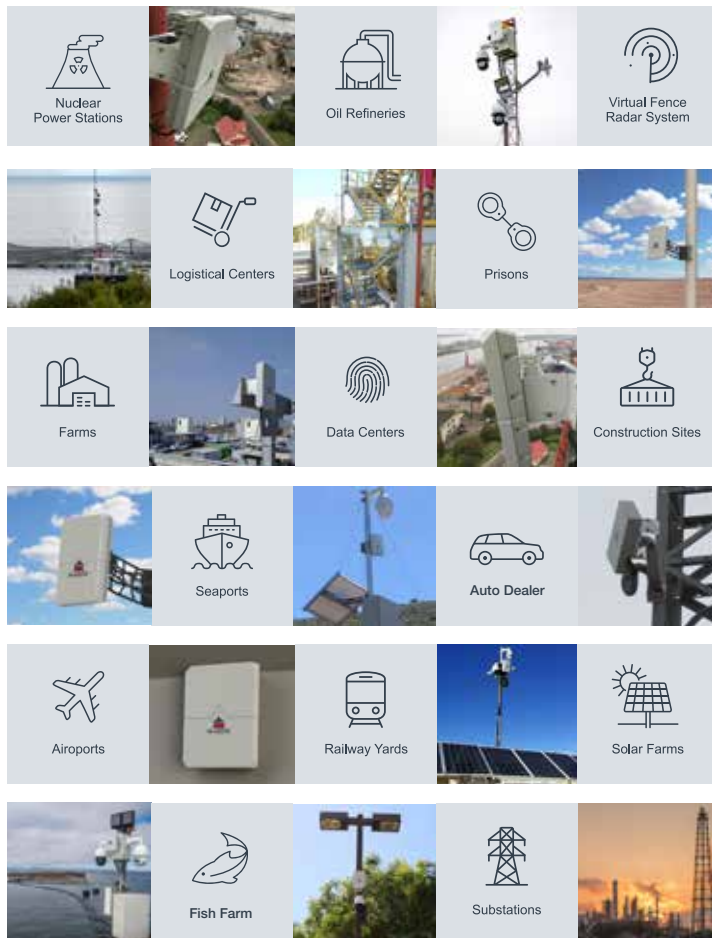
The Scepter-C is MAGOS' long range addition to our advanced and cost effective perimeter protection detection solutions. The Scepter-C is most suited for large perimeters and areas that either have a wide area to cover continuously (Parking lots, Farms etc. or a very long perimeter(Airport, ports etc.).

MAGOS' CE Certified addition to our advanced and cost effective perimeter protection detection solutions. The Scepter-C is most suited for medium-large perimeters and areas that either have a wide area to cover continuously (Parking lots, Farms etc. or a very long perimeter(Airport, ports etc.).

By utilizing state of the art MIMO & Digital beam forming technology It covers an area of more than 300,000m2(>60 acres) with a detection range of up to 400m for walker 600m vehicle and yet consumes extremely low power (<5W). It boasts an ultra-high range accuracy giving it excellent performance in cluttered environments. Its small size, low power consumption and low weight make it simple to install and renders it ideal as a deployable system.



## WIDE SPECTRUM OF APPLICATIONS



## SPECIFICATIONS

Sensor type	High resolution MIMO digital beam-forming radar
Frequency	C-Band
Detection range	Up to 400m Human/600m for Vehicle/Boat Drone detection - 100m
No moving parts	MTBF of 50,000 hours
Built in tracker	Extremely low required bandwidth
Scan rate	2 scans per second
Azimuth coverage	100°
Elevation coverage	30°
High Range accuracy	<1.0m
Azimuth accuracy	1°
Target detection speed	0.3 – 25 m/sec
Power	48V, <5W
System interface	Ethernet, POE - IEEE 802.3at Type 1 (802.3af) & Type 2
Dimensions	250(w) x 300(h) x 80(d) mm / 9.8(w) x 11.8(h) x 3.15(d) inc
Weight	3 Kg/6.6lb
Approvals	CE, UE, cTUVus
Operating temperature	-40° - +85°C

